



Client Name: Light Illusion Test
Calibration Date: 2021-02-15

Probe: i1Display Pro OEM Target Colour Space: Rec709
Probe Match: i1Pro 3
Integration: 0.75
Intelligent Int.: True 0.15
Stabilisation: False 0.5
Preroll: True 0

Before Profile:

Konvion-Native-21^3_Full

Gamut Coverage: 99%
Profile Luma Max: 122.726
Profile Luma Min: 0.1206
Profile CR: 1017.92:1

Profile Points: 9261

dE00 Coverage

<1: 106 (1.14%)
>1 <2.3: 1024 (11.06%)
>2.3: 8131 (87.80%)

dE00 Limits

Min: 0.6137
Max: 14.5323
Avg: 4.5061

After Profile:

Konvion-Rec709-Verification-10^3_Full

Gamut Coverage: 96%
Profile Luma Max: 97.0707
Profile Luma Min: 0.1211
Profile CR: 801.867:1

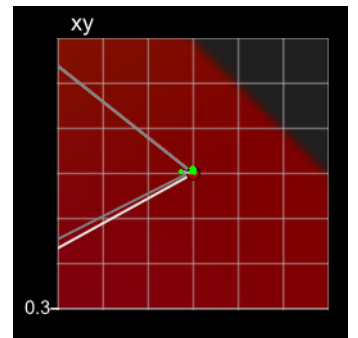
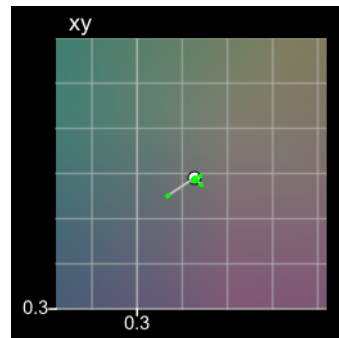
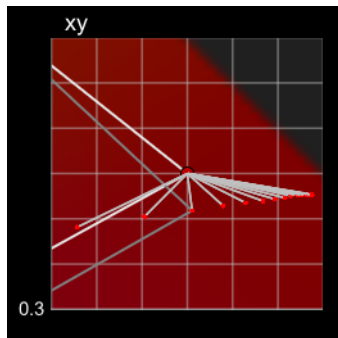
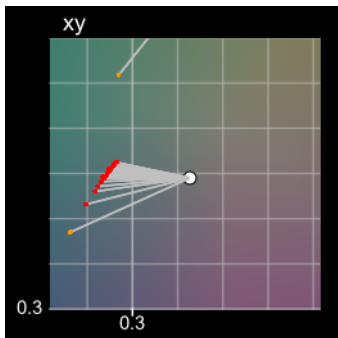
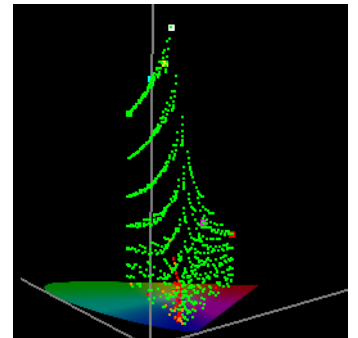
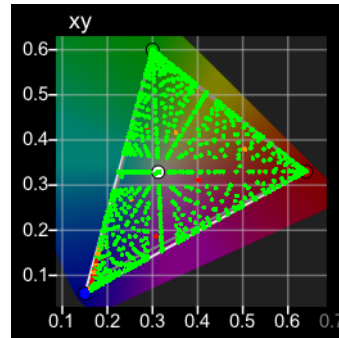
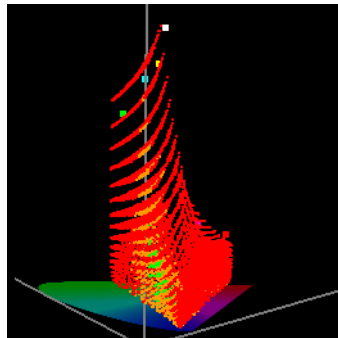
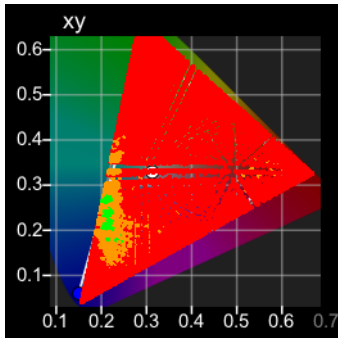
Profile Points: 1000

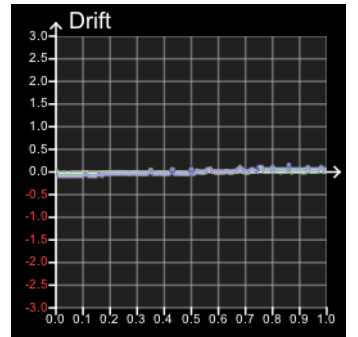
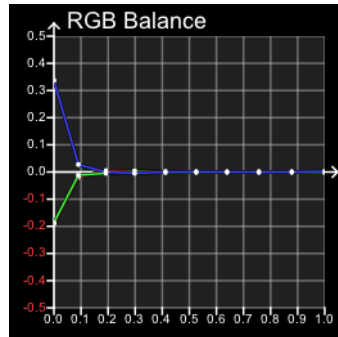
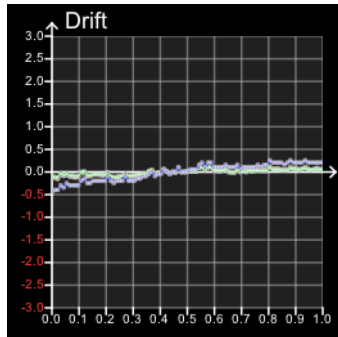
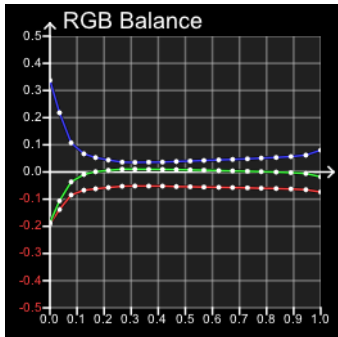
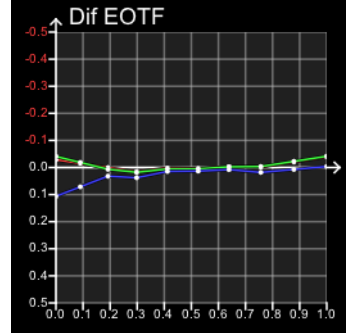
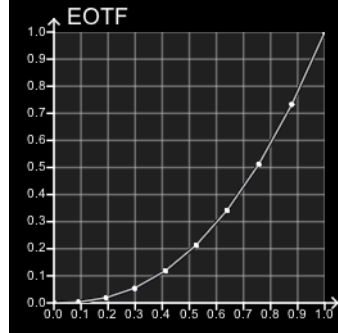
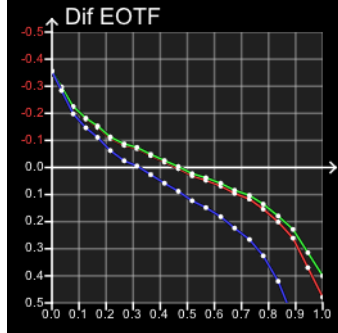
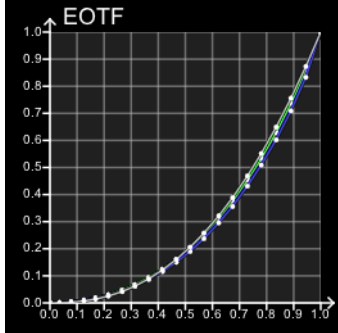
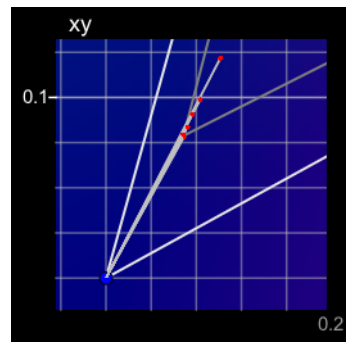
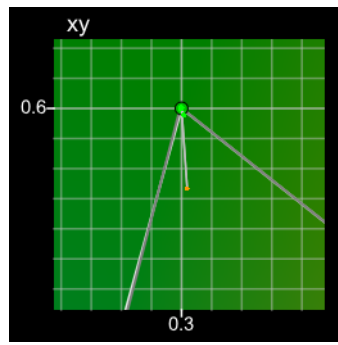
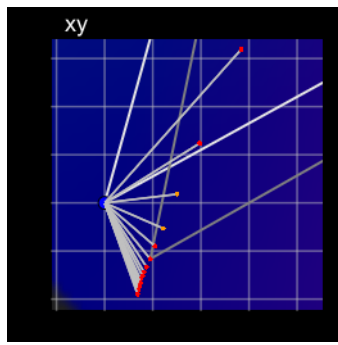
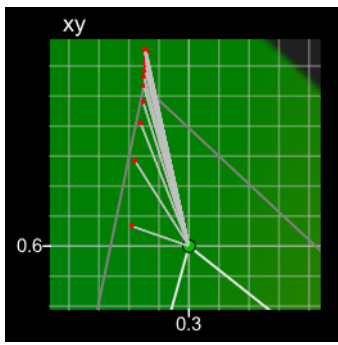
dE00 Coverage

<1: 926 (92.60%)
>1 <2.3: 21 (2.10%)
>2.3: 53 (5.30%)

dE00 Limits

Min: 0.6137
Max: 14.5323
Avg: 4.5061





dE Primary

dE 2000 Grey

RGB	dE 2000	dE 1976
0, 0, 0	0.9633	0.9842
9, 9, 9	1.1342	1.1966
20, 20, 20	1.9874	2.1524
32, 32, 32	3.6486	3.6692
43, 43, 43	4.3314	3.9471
55, 55, 55	4.7840	3.9816
68, 68, 68	5.2675	4.2019
80, 80, 80	5.7137	4.5157
93, 93, 93	6.1835	4.8623
106, 106, 106	6.6821	5.2910
119, 119, 119	7.2746	5.8532
132, 132, 132	7.7311	6.3125
145, 145, 145	8.2342	6.8357
159, 159, 159	8.6876	7.3334
172, 172, 172	9.1209	7.8230
186, 186, 186	9.5867	8.3604
199, 199, 199	10.0427	8.9111
213, 213, 213	10.4220	9.3932
227, 227, 227	10.8633	9.9702
241, 241, 241	11.2723	10.5733
255, 255, 255	11.6836	11.6278

dE 2000 Grey

RGB	dE 2000	dE 1976
0, 0, 0	1.2172	1.2511
23, 23, 23	0.3436	0.3323
49, 49, 49	0.6464	0.4518
76, 76, 76	0.3463	0.3696
105, 105, 105	0.4344	0.3049
134, 134, 134	0.2181	0.1665
163, 163, 163	0.1119	0.0844
193, 193, 193	0.0717	0.0741
224, 224, 224	0.0821	0.1090
255, 255, 255	0.2863	0.2756

dE 2000 Red

RGB	dE 2000	dE 1976
9, 0, 0	5.1201	4.2960
20, 0, 0	3.7929	3.5984
32, 0, 0	2.5849	3.0373
43, 0, 0	1.9162	2.8567
55, 0, 0	1.7581	3.2079
68, 0, 0	1.9203	3.3433
80, 0, 0	2.0404	3.5753
93, 0, 0	2.2508	3.9937
106, 0, 0	2.4400	4.3743
119, 0, 0	2.5692	4.4964
132, 0, 0	2.7614	4.5845
145, 0, 0	2.9209	4.4467
159, 0, 0	3.1641	4.3160
172, 0, 0	3.5146	4.4664
186, 0, 0	3.9439	4.9296
199, 0, 0	4.4867	5.8409
213, 0, 0	5.0900	7.0751
227, 0, 0	5.6641	8.4708
241, 0, 0	6.1973	9.9843
255, 0, 0	6.4763	11.4251

dE 2000 Green

RGB	dE 2000	dE 1976
0, 9, 0	1.8300	1.8355
0, 20, 0	1.9589	2.0704
0, 32, 0	4.2782	6.2275
0, 43, 0	3.6242	7.4085
0, 55, 0	3.0630	7.3396
0, 68, 0	3.1062	8.5661
0, 80, 0	3.2464	10.1026
0, 93, 0	3.4125	11.9746
0, 106, 0	3.5550	13.7171
0, 119, 0	3.6572	15.2225
0, 132, 0	3.7143	16.5686
0, 145, 0	3.8585	18.2299
0, 159, 0	3.9692	19.9385
0, 172, 0	4.0554	21.4079
0, 186, 0	4.1803	23.1861
0, 199, 0	4.2791	24.7960
0, 213, 0	4.3910	26.5532
0, 227, 0	4.5398	28.4574
0, 241, 0	4.7398	30.6583
0, 255, 0	5.0626	33.3166

dE 2000 Blue

RGB	dE 2000	dE 1976
0, 0, 9	11.3819	15.7036
0, 0, 20	8.4891	13.0641
0, 0, 32	4.5513	8.4406
0, 0, 43	2.3651	4.7256
0, 0, 55	1.6936	2.5968
0, 0, 68	2.0130	3.0871

dE 2000 Red

RGB	dE 2000	dE 1976
23, 0, 0	4.9125	4.8125
49, 0, 0	2.3416	4.0009
76, 0, 0	0.9976	2.5140
105, 0, 0	0.1105	0.2777
134, 0, 0	0.2490	0.4227
163, 0, 0	0.2708	0.4781
193, 0, 0	0.2253	0.4654
224, 0, 0	0.0827	0.1726
255, 0, 0	0.1196	0.3103

dE 2000 Green

RGB	dE 2000	dE 1976
0, 23, 0	3.0840	3.3568
0, 49, 0	1.0760	2.3861
0, 76, 0	0.3013	0.7374
0, 105, 0	0.0639	0.1394
0, 134, 0	0.0583	0.1443
0, 163, 0	0.0347	0.0785
0, 193, 0	0.0693	0.2154
0, 224, 0	0.0644	0.2597
0, 255, 0	0.0397	0.1468

dE 2000 Blue

RGB	dE 2000	dE 1976
0, 0, 23	5.7123	10.3384
0, 0, 49	2.3667	5.6229
0, 0, 76	3.7940	10.7397
0, 0, 105	5.1210	15.5088
0, 0, 134	5.3955	17.0380
0, 0, 163	5.7917	18.6292

0,	0,	80	2.6081	5.5287
0,	0,	93	3.3427	8.4064
0,	0,	106	4.1755	11.5751
0,	0,	119	4.6723	13.8291
0,	0,	132	5.0520	15.6747
0,	0,	145	5.3621	17.6755
0,	0,	159	5.7689	20.0509
0,	0,	172	6.0456	21.9684
0,	0,	186	6.3318	24.1579
0,	0,	199	6.5135	25.8893
0,	0,	213	6.8234	28.3559
0,	0,	227	7.0441	30.7730
0,	0,	241	7.3079	33.8584
0,	0,	255	7.6729	39.0944

0,	0,	193	6.4371	21.0266
0,	0,	224	7.3998	23.8742
0,	0,	255	8.3823	26.8610